



Notice of Operations at London Array Offshore Wind Farm

| | | | |
|------------------------|-------------------------------------|-------------------|------------|
| Date of Notice: | 7th November 2021 | Notice no: | 601 |
|------------------------|-------------------------------------|-------------------|------------|

The intention of this notice is to give an overview of operations and maintenance activities within the London Array Wind Farm and the vessels involved.

London Array Offshore Wind Farm

For general information on the London Array project, go to our website at: www.londonarray.com
 If you have any questions on the offshore activities, or request further information, please direct them to: marinecoordinators@londonarray.com

Work planned for period 08/11/2021 to 14/11/2021

1. Vessels on site:

- **Crew Transfer Vessels: Windcat 21, Windcat 27 and Windcat 36** will take offshore technicians to the Offshore Wind Turbine Generators and Offshore Substations for routine operations and maintenance work over the full 24 hour period.
- **Survey Vessel Spectrum 1** will carry out survey operations across the full 24 hour period.

2. Installations

All 175 wind turbines and two sub-station structures as built locations please see the appendix at the end of this notice.

3. Array cables

All Array cables have been installed and the cables have been buried.

4. Marker Buoys Onsite

Foulgers Gat Safe passage marker buoys

| Identity | Lat (WGS 84) | Long (WGS 84) | Light |
|------------------|--------------|---------------|------------|
| Long Sand Inner | 51°38.77' N | 001°25.43' E | Iso. 2 sec |
| Long Sand Outer | 51°34.61' N | 001°28.33' E | Iso. 2 sec |
| Long Sand Middle | 51°35.60' N | 001°26.45' E | Iso. 5 sec |

Characteristics (all buoys) Spherical with Red and White vertical stripes

5. Marker Buoys Offsite

Reduced clearances at the Kentish Flats and BritNed cable crossings. A Notice to Mariners was issued by the Hydrographic Office regarding amendment of buoyage at Kentish Flats crossing and placing of an additional buoy at BritNed crossing.

- **Kentish Flats** Three special marks and a South Cardinal Mark have been installed to mark the four rock berms on the crossing of the Kentish Flats and London Array Export cable. At these crossings, the typical seabed level was -4m LAT. Due to the newly installed rock beam the depth in some areas is now -1.0m LAT.

Kentish Flats/London array cable crossings have marker buoys at the following locations:

51° 25.56N 001° 06.45E (KFMSM1)
51° 25.00N 001° 06.44E (KFMSM2)
51° 24.86N 001° 05.77E (KFMSM3)
51° 25.41N 001° 05.69E (KFMSM4)

- **BritNed** cable crossing (51° 28'.583N, 001° 17'.417E). At this crossing the seabed level varies: From -6.5m LAT to -9m LAT. Due to the newly installed rock beam the depth in some areas is now -4m LAT.

A North Cardinal Buoy has been installed in the following position: - Named BRIT NORTH

51°28.718N 001° 17.50E North Cardinal Exhibiting Q light characteristic

6. Relevant plans for current activity

| | Name |
|---|--|
| A | Contractors' method statements and risk assessments |
| B | Marine Coordination Procedure |
| C | Notices to Mariners issued |
| D | Marine Licence |
| E | London Array Emergency Response Cooperation Plan (ERCOP) |

7. Safe distances within the Offshore Wind farm:

- A 50m radius advisory caution zone is established around each wind turbine and offshore sub-station platform.
- A 100m exclusion zone will be in place during rope access operations.
- A 500m exclusion zone will be in place around Wind Pioneer whilst pinned at location.

ALL VESSELS WISHING TO TRANSIT THROUGH THE LONDON ARRAY WIND FARM SHOULD MONITOR VHF CH16 AND MAKE EVERY EFFORT TO CONTACT LAL VESSELS ON SITE PRIOR TO ANY ENTRY.

8. Contact details

All crew transfer vessels can be contacted on VHF Ch16

The address of the London Array Management office and O&M Management is:

Name & Registered Office: London Array Limited. Registered at: 22 Mount Ephraim, Tunbridge Wells, Kent TN4 8AS Registered in England and Wales No 04344423.

London Array Limited.
Operations and Maintenance Building,
Port of Ramsgate,
Military Road,
Ramsgate,
CT11 9LG, UK

The Marine Coordinators office is manned between 06:00 – 22:00 and can be contacted on Land line +44 (0)1843 855795 or via email: marinecoordinators@londonarray.com

9. Latest Notice to Mariners applicable to London Array area.

London Array Notices to Mariners:

09/2020 rev 2 – Archaeological Exclusion Zone
10/2020 – Exposed Cables
01/2021 – Charted Wave Buoys

Port of London Notices to Mariners:

None currently active for the London Array area.

Trinity House Notice to Mariners:

None currently active for the London Array area.

10. Distribution of this Notice

The distribution of this notice is as per email recipient's header. If you are not the appropriate recipient of these notices, or do not wish to receive the notices in the future, please contact us at the address at the head of this notice or reply to this email.

11. Attachments

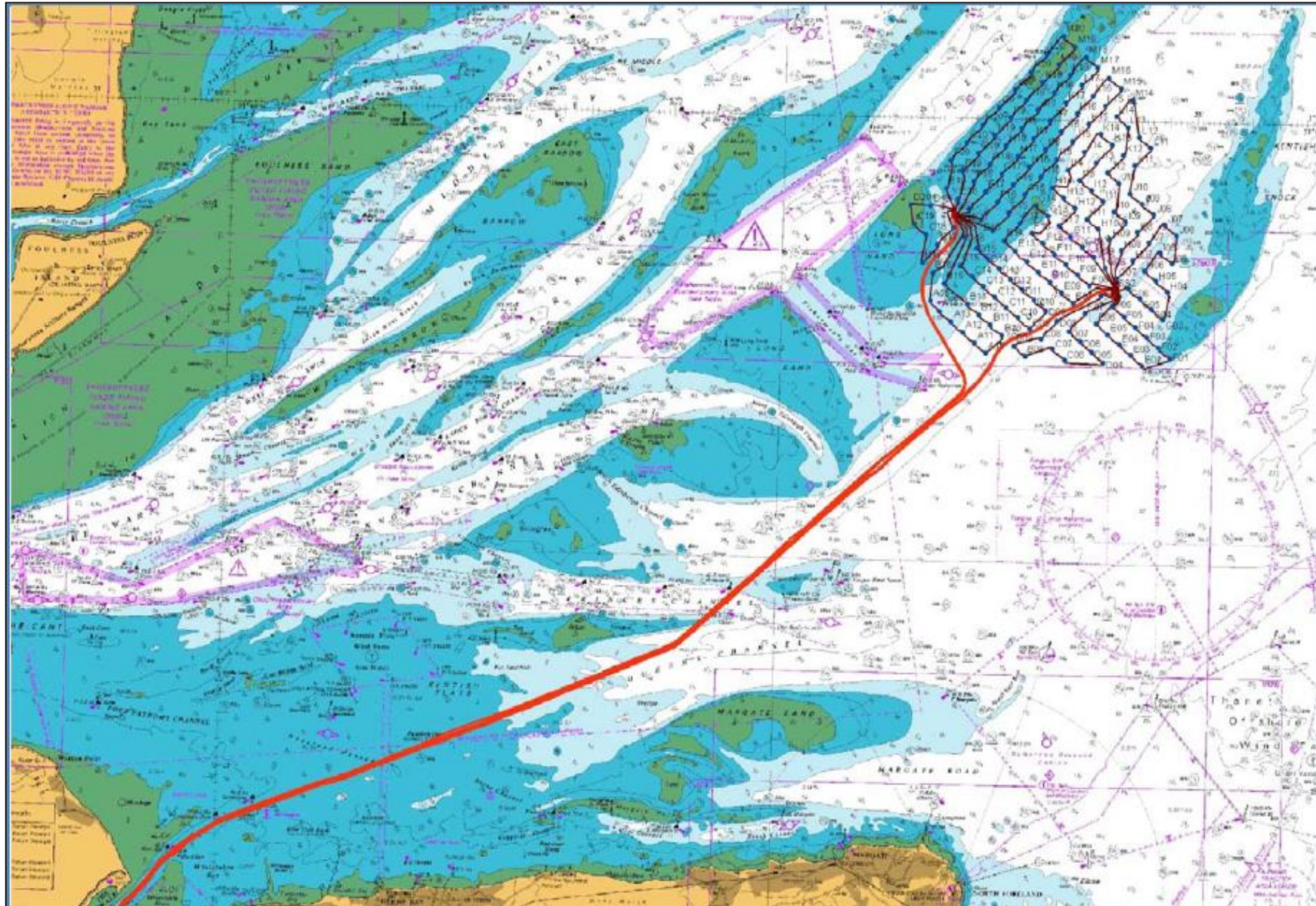
- As built locations of wind farm structures (At the end of this document)
- Lay out of wind farm. (At the end of this document)
- Vessel Matrix (Separate attachment to this e-mail)

Report made by:

Duty Marine Coordinator
Email: marinecoordinators@londonarray.com
Land line: +44 (0)1843 855795

| London Array WTG and Substations coordinates as built (WGS 84) | | | | | | | | |
|--|--------------|--------------|-----|--------------|--------------|---------------------|--------------|--------------|
| WTG | Latitude | Longitude | WTG | Latitude | Longitude | WTG | Latitude | Longitude |
| A10 | 51° 34.715'N | 01° 27.455'E | E18 | 51° 38.183'N | 01° 26.331'E | I08 | 51° 37.511'N | 01° 32.871'E |
| A11 | 51° 34.925'N | 01° 27.018'E | E19 | 51° 38.413'N | 01° 25.904'E | I09 | 51° 37.741'N | 01° 32.446'E |
| A12 | 51° 35.174'N | 01° 26.607'E | F01 | 51° 34.679'N | 01° 34.143'E | I10 | 51° 37.971'N | 01° 32.020'E |
| A13 | 51° 35.400'N | 01° 26.175'E | F02 | 51° 34.909'N | 01° 33.716'E | I11 | 51° 38.201'N | 01° 31.594'E |
| A14 | 51° 35.634'N | 01° 25.755'E | F03 | 51° 35.139'N | 01° 33.290'E | I12 | 51° 38.431'N | 01° 31.168'E |
| A15 | 51° 35.865'N | 01° 25.443'E | F04 | 51° 35.369'N | 01° 32.864'E | I13 | 51° 38.662'N | 01° 30.742'E |
| B08 | 51° 34.660'N | 01° 28.881'E | F05 | 51° 35.599'N | 01° 32.438'E | I14 | 51° 38.892'N | 01° 30.316'E |
| B09 | 51° 34.886'N | 01° 28.448'E | F06 | 51° 35.834'N | 01° 32.004'E | I15 | 51° 39.122'N | 01° 29.890'E |
| B10 | 51° 35.121'N | 01° 28.029'E | F07 | 51° 36.059'N | 01° 31.586'E | I16 | 51° 39.352'N | 01° 29.464'E |
| B11 | 51° 35.351'N | 01° 27.603'E | F08 | 51° 36.289'N | 01° 31.160'E | I17 | 51° 39.582'N | 01° 29.038'E |
| B12 | 51° 35.581'N | 01° 27.177'E | F09 | 51° 36.519'N | 01° 30.735'E | I18 | 51° 39.812'N | 01° 28.612'E |
| B13 | 51° 35.811'N | 01° 26.751'E | F10 | 51° 36.749'N | 01° 30.309'E | I19 | 51° 40.042'N | 01° 28.186'E |
| B15 | 51° 36.271'N | 01° 25.900'E | F11 | 51° 36.988'N | 01° 29.896'E | I20 | 51° 40.276'N | 01° 27.753'E |
| B16 | 51° 36.501'N | 01° 25.473'E | F12 | 51° 37.210'N | 01° 29.457'E | J06 | 51° 37.452'N | 01° 34.282'E |
| B17 | 51° 36.738'N | 01° 25.090'E | F13 | 51° 37.440'N | 01° 29.031'E | J07 | 51° 37.681'N | 01° 33.856'E |
| C06 | 51° 34.607'N | 01° 30.302'E | F14 | 51° 37.670'N | 01° 28.605'E | J08 | 51° 37.918'N | 01° 33.442'E |
| C07 | 51° 34.837'N | 01° 29.876'E | F15 | 51° 37.900'N | 01° 28.179'E | J09 | 51° 38.150'N | 01° 33.019'E |
| C08 | 51° 35.085'N | 01° 29.418'E | F16 | 51° 38.130'N | 01° 27.753'E | J10 | 51° 38.380'N | 01° 32.593'E |
| C09 | 51° 35.298'N | 01° 29.025'E | F17 | 51° 38.360'N | 01° 27.327'E | J11 | 51° 38.610'N | 01° 32.167'E |
| C10 | 51° 35.528'N | 01° 28.599'E | F18 | 51° 38.590'N | 01° 26.901'E | J12 | 51° 38.840'N | 01° 31.741'E |
| C11 | 51° 35.758'N | 01° 28.173'E | F19 | 51° 38.820'N | 01° 26.475'E | J13 | 51° 39.070'N | 01° 31.315'E |
| C12 | 51° 35.988'N | 01° 27.747'E | F20 | 51° 39.050'N | 01° 26.048'E | J14 | 51° 39.300'N | 01° 30.889'E |
| C13 | 51° 36.220'N | 01° 27.324'E | G03 | 51° 35.546'N | 01° 33.860'E | J15 | 51° 39.530'N | 01° 30.463'E |
| C14 | 51° 36.448'N | 01° 26.895'E | G04 | 51° 35.776'N | 01° 33.434'E | J16 | 51° 39.760'N | 01° 30.037'E |
| C15 | 51° 36.678'N | 01° 26.469'E | G05 | 51° 36.006'N | 01° 33.008'E | J17 | 51° 39.990'N | 01° 29.611'E |
| C17 | 51° 37.138'N | 01° 25.616'E | G06 | 51° 36.244'N | 01° 32.601'E | J18 | 51° 40.220'N | 01° 29.185'E |
| C18 | 51° 37.369'N | 01° 25.191'E | G07 | 51° 36.466'N | 01° 32.156'E | J19 | 51° 40.451'N | 01° 28.759'E |
| C19 | 51° 37.599'N | 01° 24.765'E | G08 | 51° 36.701'N | 01° 31.757'E | J20 | 51° 40.681'N | 01° 28.332'E |
| D04 | 51° 34.554'N | 01° 31.724'E | G09 | 51° 36.927'N | 01° 31.305'E | K11 | 51° 39.017'N | 01° 32.736'E |
| D05 | 51° 34.784'N | 01° 31.298'E | G10 | 51° 37.151'N | 01° 30.871'E | K12 | 51° 39.257'N | 01° 32.292'E |
| D06 | 51° 35.015'N | 01° 30.872'E | G11 | 51° 37.390'N | 01° 30.446'E | K13 | 51° 39.477'N | 01° 31.885'E |
| D07 | 51° 35.247'N | 01° 30.433'E | G12 | 51° 37.617'N | 01° 30.027'E | K14 | 51° 39.707'N | 01° 31.458'E |
| D08 | 51° 35.475'N | 01° 30.021'E | G13 | 51° 37.847'N | 01° 29.601'E | K15 | 51° 39.954'N | 01° 30.995'E |
| D09 | 51° 35.705'N | 01° 29.595'E | G14 | 51° 38.077'N | 01° 29.176'E | K16 | 51° 40.167'N | 01° 30.607'E |
| D10 | 51° 35.935'N | 01° 29.169'E | G15 | 51° 38.307'N | 01° 28.749'E | K17 | 51° 40.402'N | 01° 30.164'E |
| D11 | 51° 36.170'N | 01° 28.733'E | G16 | 51° 38.537'N | 01° 28.323'E | K18 | 51° 40.621'N | 01° 29.773'E |
| D12 | 51° 36.395'N | 01° 28.317'E | G17 | 51° 38.768'N | 01° 27.897'E | K19 | 51° 40.858'N | 01° 29.328'E |
| D13 | 51° 36.625'N | 01° 27.891'E | G18 | 51° 39.006'N | 01° 27.482'E | K20 | 51° 41.100'N | 01° 28.879'E |
| D14 | 51° 36.855'N | 01° 27.465'E | G19 | 51° 39.228'N | 01° 27.045'E | L11 | 51° 39.424'N | 01° 33.306'E |
| D15 | 51° 37.086'N | 01° 27.039'E | G20 | 51° 39.458'N | 01° 26.619'E | L12 | 51° 39.654'N | 01° 32.880'E |
| D16 | 51° 37.316'N | 01° 26.613'E | H04 | 51° 36.183'N | 01° 34.004'E | L13 | 51° 39.862'N | 01° 32.455'E |
| D17 | 51° 37.535'N | 01° 26.206'E | H05 | 51° 36.413'N | 01° 33.579'E | L14 | 51° 40.114'N | 01° 32.028'E |
| D19 | 51° 38.006'N | 01° 25.335'E | H06 | 51° 36.644'N | 01° 33.152'E | L15 | 51° 40.345'N | 01° 31.602'E |
| D20 | 51° 38.024'N | 01° 24.612'E | H07 | 51° 36.857'N | 01° 32.766'E | L16 | 51° 40.575'N | 01° 31.176'E |
| E02 | 51° 34.501'N | 01° 33.146'E | H08 | 51° 37.104'N | 01° 32.301'E | L17 | 51° 40.805'N | 01° 30.750'E |
| E03 | 51° 34.732'N | 01° 32.720'E | H09 | 51° 37.334'N | 01° 31.876'E | L18 | 51° 41.035'N | 01° 30.324'E |
| E04 | 51° 34.962'N | 01° 32.294'E | H10 | 51° 37.564'N | 01° 31.450'E | L19 | 51° 41.265'N | 01° 29.899'E |
| E05 | 51° 35.192'N | 01° 31.868'E | H11 | 51° 37.794'N | 01° 31.023'E | L20 | 51° 41.481'N | 01° 29.523'E |
| E06 | 51° 35.422'N | 01° 31.442'E | H12 | 51° 38.024'N | 01° 30.598'E | M14 | 51° 40.473'N | 01° 32.617'E |
| E07 | 51° 35.652'N | 01° 31.016'E | H13 | 51° 38.254'N | 01° 30.172'E | M15 | 51° 40.752'N | 01° 32.173'E |
| E08 | 51° 35.882'N | 01° 30.590'E | H14 | 51° 38.484'N | 01° 29.746'E | M16 | 51° 40.982'N | 01° 31.747'E |
| E09 | 51° 36.112'N | 01° 30.165'E | H15 | 51° 38.714'N | 01° 29.319'E | M17 | 51° 41.212'N | 01° 31.320'E |
| E10 | 51° 36.330'N | 01° 29.727'E | H16 | 51° 38.945'N | 01° 28.894'E | M18 | 51° 41.428'N | 01° 30.864'E |
| E11 | 51° 36.573'N | 01° 29.313'E | H17 | 51° 39.192'N | 01° 28.435'E | M19 | 51° 41.672'N | 01° 30.468'E |
| E12 | 51° 36.802'N | 01° 28.886'E | H18 | 51° 39.405'N | 01° 28.041'E | M20 | 51° 41.902'N | 01° 30.042'E |
| E13 | 51° 37.033'N | 01° 28.461'E | H19 | 51° 39.626'N | 01° 27.631'E | Sub Stations | | |
| E14 | 51° 37.263'N | 01° 28.035'E | H20 | 51° 39.865'N | 01° 27.190'E | SS1 | 51° 37.815'N | 01° 26.209'E |
| E15 | 51° 37.493'N | 01° 27.609'E | I05 | 51° 36.845'N | 01° 34.146'E | SS2 | 51° 36.148'N | 01° 32.085'E |
| E16 | 51° 37.723'N | 01° 27.183'E | I06 | 51° 37.051'N | 01° 33.723'E | Met Mast | | |
| E17 | 51° 37.953'N | 01° 26.757'E | I07 | 51° 37.281'N | 01° 33.297'E | MM | 51° 35.640'N | 01° 23.138'E |

Layout of London Array Offshore Wind Farm, and Export cable route



Name & Registered Office: London Array Limited. Registered at: 22 Mount Ephraim, Tunbridge Wells, Kent TN4 8AS Registered in England and Wales No 04344423.

London Array Offshore Wind Farm

Vessel Data Matrix 07/11/2021



Vessels On Site

| Vessel Picture | Vessel Name/Owner | LOA | Beam | Draft | Call Sign/MMSI | Contact Details | Contractor | Site Function | Base Port | Area of operations |
|---|---|--------|------|-------|---|---|------------|-------------------------|-----------|--------------------|
|  | Windcat 21 Windcat Workboats (Jet) | 17.75m | 6.1m | 1.2m | 2DCN9 / 235077831 | 07584 154 888 windcat21@windcatworkboats.com | LAL | Crew Transfer Vessel | Ramsgate | On Site |
|  | Windcat 27 Windcat Workboats (Jet) | 17.75m | 6.1m | 1.2m | 2ELD8 / 235086068 | 07795 441 303 windcat27@windcatworkboats.com | LAL | Crew Transfer Vessel | Ramsgate | On Site |
|  | Windcat 36 Windcat Workboats (Variable pitch prop) | 19m | 6.5m | 2.5m | Call Sign 2HXX9 MMSI 235107401 | 07775 916 379 windcat36@windcatworkboats.com | LAL | Crew Transfer Vessel | Ramsgate | On Site |
|  | Spectrum 1 Spectrum Offshore (Fixed Prop) | 16.5m | 6.5m | 1.6m | Call Sign 2CQX5 MMSI 235075020 | 07538565561 spectrum1@spectrum-offshore.com | LAL | Survey vessel | Ramsgate | On Site |