



Notice of Operations at London Array Offshore Wind Farm

Date of Notice:	26/03/2023	Notice no:	671
------------------------	-------------------	-------------------	------------

The intention of this notice is to give an overview of operations and maintenance activities within the London Array Wind Farm and the vessels involved.

London Array Offshore Wind Farm

For general information on the London Array project, go to our website at: www.londonarray.com
 If you have any questions on the offshore activities, or request further information, please contact londonarraymarinecoordinators@rwe.com

Work planned for period 27/03/2023 to 02/04/2023.

1. Vessels on site:

- **Crew Transfer Vessels: Windcat 27, Windcat 29, Windcat 39, Windcat 21, Windcat 36 and Spectrum 3** will take technicians to the Offshore Wind Turbine Generators and Offshore Substations for routine operations and maintenance work.
- The Jack-up Vessel "**Wind Server**" provided by Ziton, currently on site to carry generators exchanges at **D17** and **M14** .
- **Spectrum 4** will be on site carrying out ROV subsea inspection works.

2. Installations

All 175 wind turbines and two sub-station structures as built locations please see the appendix at the end of this notice.

3. Array cables

All Array cables have been installed and the cables have been buried.

4. Marker Buoys Onsite

Foulgers Gat Safe passage marker buoys

Identity	Lat (WGS 84)	Long (WGS 84)	Light
Long Sand Inner	51°38.77' N	001°25.43' E	Iso. 2 sec
Long Sand Outer	51°34.61' N	001°28.33' E	Iso. 2 sec
Long Sand Middle	51°35.60' N	001°26.45' E	Iso. 5 sec

Characteristics (all buoys) Spherical with Red and White vertical stripes

5. Marker Buoys Offsite

Reduced clearances at the Kentish Flats and BritNed cable crossings. A Notice to Mariners was issued by the Hydrographic Office regarding amendment of buoyage at Kentish Flats crossing and placing of an additional buoy at BritNed crossing.

- **Kentish Flats** Three special marks and a South Cardinal Mark have been installed to mark the four rock berms on the crossing of the Kentish Flats and London Array Export cable. At these crossings,

the typical seabed level was -4m LAT. Due to the newly installed rock beam the depth in some areas is now -1.0m LAT.

Kentish Flats/London array cable crossings have marker buoys at the following locations:

51° 25.56N 001° 06.45E (KFSM1)
51° 25.00N 001° 06.44E (KFSM2)
51° 24.86N 001° 05.77E (KFSM3)
51° 25.41N 001° 05.69E (KFSM4)

- **BritNed** cable crossing (51° 28'.583N, 001° 17'.417E). At this crossing the seabed level varies: From -6.5m LAT to -9m LAT.
Due to the newly installed rock beam the depth in some areas is now -4m LAT.

A North Cardinal Buoy has been installed in the following position: - Named BRIT NORTH

51°28.718N 001° 17.50E North Cardinal Exhibiting Q light characteristic

6. Relevant plans for current activity

	Name
A	Contractors' method statements and risk assessments
B	Marine Coordination Procedure
C	Notices to Mariners issued
D	Marine Licence
E	London Array Emergency Response Cooperation Plan (ERCOP)

7. Safe distances within the Offshore Wind farm:

- A 50m radius advisory caution zone is established around each wind turbine and offshore sub-station platform.

ALL VESSELS WISHING TO TRANSIT THROUGH THE LONDON ARRAY WIND FARM SHOULD MONITOR VHF CH16 AND MAKE EVERY EFFORT TO CONTACT LAL VESSELS ON SITE PRIOR TO ANY ENTRY.

8. Contact details

All crew transfer vessels can be contacted on VHF Ch16

The address of the London Array Management office and O&M Management is:

RWE London Array
Operations and Maintenance Building,
Port of Ramsgate,
Military Road,
Ramsgate,
CT11 9LG, UK

The Marine Coordinators office is manned between 06:00 – 22:00 and can be contacted on Land line +44 (0)1843 855795 or via email: londonarraymarinecoordinators@rwe.com.

9. Latest Notice to Mariners applicable to London Array area.

London Array Notices to Mariners:

09/2020 rev 2 – Archaeological Exclusion Zone
10/2020 – Exposed Cables
01/2021 – Charted Wave Buoys
01/2023 rev 3 – Jack up operations (Ziton Wind Server)
02/2023 – Potential Exposed and Shallow Buried HV cables.

Port of London Notices to Mariners:

None currently active for the London Array area.

Trinity House Notice to Mariners:

None currently active for the London Array area.

10. Distribution of this Notice

The distribution of this notice is as per email recipient's header. If you are not the appropriate recipient of these notices, or do not wish to receive the notices in the future, please contact us at the address at the head of this notice or reply to this email.

11. Attachments

- As built locations of wind farm structures (At the end of this document)
- Lay out of wind farm. (At the end of this document)
- Vessel Matrix (Separate attachment to this e-mail)

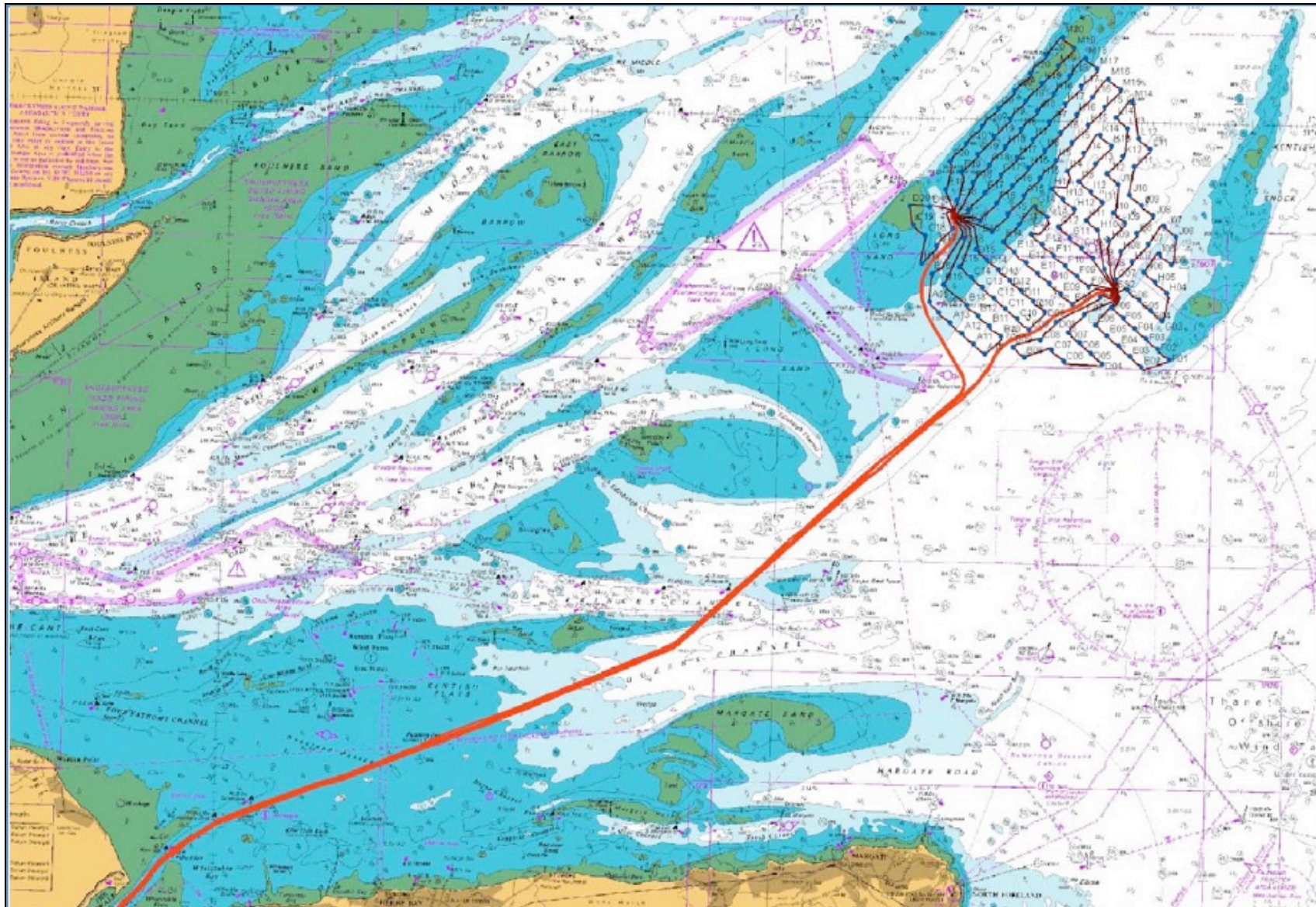
Report made by:

Duty Marine Coordinator
Email: londonarraymarinecoordinators@rwe.com
Land line: +44 (0)1843 855795

London Array WTG and Substations coordinates as built (WGS 84)

WTG	Latitude	Longitude	WTG	Latitude	Longitude	WTG	Latitude	Longitude
A10	51° 34.715'N	01° 27.455'E	E18	51° 38.183'N	01° 26.331'E	I08	51° 37.511'N	01° 32.871'E
A11	51° 34.925'N	01° 27.018'E	E19	51° 38.413'N	01° 25.904'E	I09	51° 37.741'N	01° 32.446'E
A12	51° 35.174'N	01° 26.607'E	F01	51° 34.679'N	01° 34.143'E	I10	51° 37.971'N	01° 32.020'E
A13	51° 35.400'N	01° 26.175'E	F02	51° 34.909'N	01° 33.716'E	I11	51° 38.201'N	01° 31.594'E
A14	51° 35.634'N	01° 25.755'E	F03	51° 35.139'N	01° 33.290'E	I12	51° 38.431'N	01° 31.168'E
A15	51° 35.865'N	01° 25.443'E	F04	51° 35.369'N	01° 32.864'E	I13	51° 38.662'N	01° 30.742'E
B08	51° 34.660'N	01° 28.881'E	F05	51° 35.599'N	01° 32.438'E	I14	51° 38.892'N	01° 30.316'E
B09	51° 34.886'N	01° 28.448'E	F06	51° 35.834'N	01° 32.004'E	I15	51° 39.122'N	01° 29.890'E
B10	51° 35.121'N	01° 28.029'E	F07	51° 36.059'N	01° 31.586'E	I16	51° 39.352'N	01° 29.464'E
B11	51° 35.351'N	01° 27.603'E	F08	51° 36.289'N	01° 31.160'E	I17	51° 39.582'N	01° 29.038'E
B12	51° 35.581'N	01° 27.177'E	F09	51° 36.519'N	01° 30.735'E	I18	51° 39.812'N	01° 28.612'E
B13	51° 35.811'N	01° 26.751'E	F10	51° 36.749'N	01° 30.309'E	I19	51° 40.042'N	01° 28.186'E
B15	51° 36.271'N	01° 25.900'E	F11	51° 36.988'N	01° 29.896'E	I20	51° 40.276'N	01° 27.753'E
B16	51° 36.501'N	01° 25.473'E	F12	51° 37.210'N	01° 29.457'E	J06	51° 37.452'N	01° 34.282'E
B17	51° 36.738'N	01° 25.090'E	F13	51° 37.440'N	01° 29.031'E	J07	51° 37.681'N	01° 33.856'E
C06	51° 34.607'N	01° 30.302'E	F14	51° 37.670'N	01° 28.605'E	J08	51° 37.918'N	01° 33.442'E
C07	51° 34.837'N	01° 29.876'E	F15	51° 37.900'N	01° 28.179'E	J09	51° 38.150'N	01° 33.019'E
C08	51° 35.085'N	01° 29.418'E	F16	51° 38.130'N	01° 27.753'E	J10	51° 38.380'N	01° 32.593'E
C09	51° 35.298'N	01° 29.025'E	F17	51° 38.360'N	01° 27.327'E	J11	51° 38.610'N	01° 32.167'E
C10	51° 35.528'N	01° 28.599'E	F18	51° 38.590'N	01° 26.901'E	J12	51° 38.840'N	01° 31.741'E
C11	51° 35.758'N	01° 28.173'E	F19	51° 38.820'N	01° 26.475'E	J13	51° 39.070'N	01° 31.315'E
C12	51° 35.988'N	01° 27.747'E	F20	51° 39.050'N	01° 26.048'E	J14	51° 39.300'N	01° 30.889'E
C13	51° 36.220'N	01° 27.324'E	G03	51° 35.546'N	01° 33.860'E	J15	51° 39.530'N	01° 30.463'E
C14	51° 36.448'N	01° 26.895'E	G04	51° 35.776'N	01° 33.434'E	J16	51° 39.760'N	01° 30.037'E
C15	51° 36.678'N	01° 26.469'E	G05	51° 36.006'N	01° 33.008'E	J17	51° 39.990'N	01° 29.611'E
C17	51° 37.138'N	01° 25.616'E	G06	51° 36.244'N	01° 32.601'E	J18	51° 40.220'N	01° 29.185'E
C18	51° 37.369'N	01° 25.191'E	G07	51° 36.466'N	01° 32.156'E	J19	51° 40.451'N	01° 28.759'E
C19	51° 37.599'N	01° 24.765'E	G08	51° 36.701'N	01° 31.757'E	J20	51° 40.681'N	01° 28.332'E
D04	51° 34.554'N	01° 31.724'E	G09	51° 36.927'N	01° 31.305'E	K11	51° 39.017'N	01° 32.736'E
D05	51° 34.784'N	01° 31.298'E	G10	51° 37.151'N	01° 30.871'E	K12	51° 39.257'N	01° 32.292'E
D06	51° 35.015'N	01° 30.872'E	G11	51° 37.390'N	01° 30.446'E	K13	51° 39.477'N	01° 31.885'E
D07	51° 35.247'N	01° 30.433'E	G12	51° 37.617'N	01° 30.027'E	K14	51° 39.707'N	01° 31.458'E
D08	51° 35.475'N	01° 30.021'E	G13	51° 37.847'N	01° 29.601'E	K15	51° 39.954'N	01° 30.995'E
D09	51° 35.705'N	01° 29.595'E	G14	51° 38.077'N	01° 29.176'E	K16	51° 40.167'N	01° 30.607'E
D10	51° 35.935'N	01° 29.169'E	G15	51° 38.307'N	01° 28.749'E	K17	51° 40.402'N	01° 30.164'E
D11	51° 36.170'N	01° 28.733'E	G16	51° 38.537'N	01° 28.323'E	K18	51° 40.621'N	01° 29.773'E
D12	51° 36.395'N	01° 28.317'E	G17	51° 38.768'N	01° 27.897'E	K19	51° 40.858'N	01° 29.328'E
D13	51° 36.625'N	01° 27.891'E	G18	51° 39.006'N	01° 27.482'E	K20	51° 41.100'N	01° 28.879'E
D14	51° 36.855'N	01° 27.465'E	G19	51° 39.228'N	01° 27.045'E	L11	51° 39.424'N	01° 33.306'E
D15	51° 37.086'N	01° 27.039'E	G20	51° 39.458'N	01° 26.619'E	L12	51° 39.654'N	01° 32.880'E
D16	51° 37.316'N	01° 26.613'E	H04	51° 36.183'N	01° 34.004'E	L13	51° 39.862'N	01° 32.455'E
D17	51° 37.535'N	01° 26.206'E	H05	51° 36.413'N	01° 33.579'E	L14	51° 40.114'N	01° 32.028'E
D19	51° 38.006'N	01° 25.335'E	H06	51° 36.644'N	01° 33.152'E	L15	51° 40.345'N	01° 31.602'E
D20	51° 38.024'N	01° 24.612'E	H07	51° 36.857'N	01° 32.766'E	L16	51° 40.575'N	01° 31.176'E
E02	51° 34.501'N	01° 33.146'E	H08	51° 37.104'N	01° 32.301'E	L17	51° 40.805'N	01° 30.750'E
E03	51° 34.732'N	01° 32.720'E	H09	51° 37.334'N	01° 31.876'E	L18	51° 41.035'N	01° 30.324'E
E04	51° 34.962'N	01° 32.294'E	H10	51° 37.564'N	01° 31.450'E	L19	51° 41.265'N	01° 29.899'E
E05	51° 35.192'N	01° 31.868'E	H11	51° 37.794'N	01° 31.023'E	L20	51° 41.481'N	01° 29.523'E
E06	51° 35.422'N	01° 31.442'E	H12	51° 38.024'N	01° 30.598'E	M14	51° 40.473'N	01° 32.617'E
E07	51° 35.652'N	01° 31.016'E	H13	51° 38.254'N	01° 30.172'E	M15	51° 40.752'N	01° 32.173'E
E08	51° 35.882'N	01° 30.590'E	H14	51° 38.484'N	01° 29.746'E	M16	51° 40.982'N	01° 31.747'E
E09	51° 36.112'N	01° 30.165'E	H15	51° 38.714'N	01° 29.319'E	M17	51° 41.212'N	01° 31.320'E
E10	51° 36.330'N	01° 29.727'E	H16	51° 38.945'N	01° 28.894'E	M18	51° 41.428'N	01° 30.864'E
E11	51° 36.573'N	01° 29.313'E	H17	51° 39.192'N	01° 28.435'E	M19	51° 41.672'N	01° 30.468'E
E12	51° 36.802'N	01° 28.886'E	H18	51° 39.405'N	01° 28.041'E	M20	51° 41.902'N	01° 30.042'E
E13	51° 37.033'N	01° 28.461'E	H19	51° 39.626'N	01° 27.631'E	Sub Stations		
E14	51° 37.263'N	01° 28.035'E	H20	51° 39.865'N	01° 27.190'E	SS1	51° 37.815'N	01° 26.209'E
E15	51° 37.493'N	01° 27.609'E	I05	51° 36.845'N	01° 34.146'E	SS2	51° 36.148'N	01° 32.085'E
E16	51° 37.723'N	01° 27.183'E	I06	51° 37.051'N	01° 33.723'E	Met Mast		
E17	51° 37.953'N	01° 26.757'E	I07	51° 37.281'N	01° 33.297'E	MM	51° 35.640'N	01° 23.138'E

Layout of London Array Offshore Wind Farm, and Export cable route



London Array Offshore Wind Farm

Vessel Data Matrix 26/03/2023



Vessels On Site

Vessel Picture	Vessel Name/Owner	LOA	Beam	Draft	Call Sign/MMSI	Contact Details	Contractor	Site Function	Base Port	Area of operations
	Windcat 27 Windcat Workboats (Jet)	18m	6.1m	1m	Call sign: 2ELD8 MMSI: 235086068	07795441303 windcat27@windcatworkboats.com	LAL	Crew Transfer Vessel	Ramsgate	On Site
	Windcat 29 Windcat Workboats (Jet)	20m	6.1m	1.2m	Call Sign 2EYQ8 MMSI 235089224	07585 151 411 windcat29@windcatworkboats.com	LAL	Crew Transfer Vessel	Ramsgate	On Site
	Windcat 36 Windcat Workboats (Variable pitch prop)	19m	6.5m	2.5m	Call Sign 2HXH9 MMSI 235107401	07775916379 windcat36@windcatworkboats.com	LAL	Crew Transfer Vessel	Ramsgate	On Site
	Windcat 39 Windcat Workboats (Variable pitch prop)	19m	6.5m	2.5m	Call Sign 2JAV6 MMSI 235114376	07867 335 489 windcat39@windcatworkboats.com	LAL	Crew Transfer Vessel	Ramsgate	On Site
	Windcat 21 Windcat Workboats (Jet)	18m	6m	1m	Call Sign 2DCN9 MMSI 235077831	windcat21@windcatworkboats.com	LAL	Crew Transfer Vessel	Ramsgate	On Site
	Spectrum 3 Spectrum Offshore (Fixed Prop)	23m	6.5m	1.8	Call Sign 2DXB6 MMSI 235082698	07538562919 spectrum3@spectrum-offshore.com	LAL	Crew Transfer Vessel	Ramsgate	On Site
	Ziton Wind Server Jack- up vessel	79.3m	32.3m	7m	Call Sign OWLB2 MMSI 219615000	TBC	LAL	Jack-up vessel	Ramsgate	On Site

London Array Offshore Wind Fa

Vessel Data Matrix

Vessel Picture	Vessel Name/Owner	LOA	Beam	Draft	Call Sign/MMSI
Vessels Off Site					
	Rambiz / Scaldis	85m	44m	3.6m	ORKA 205132000
	6 RIB's / Solent Rib Charter	6.8-8.8m	2.7m	0.5m	N/A
	Afon Caradog / Holyhead Towing	26.8m	9.0m	2.4m	MMSN7 / 235011130
	Amstel Stroon / Stemat Marine Services	26.0M	9M	2.8M	PIAS / 246203000
	Arie Dirk / Arie Dirk Marine Ltd.	18.6m	5m	2.3m	2GER / 235006067
	Atlantic Surveyor / Atlantic Marine & Aviation	61m	11m	3.4m	A8AE9 / 636011581

	Ceejay / EMU Ltd.	7.4m	3m	0.4m	VQKUS / 235009058
	Christine / AJ&A Pratt	22.1m	6.3m	2.1m	MQPQ6 / 235051179
	Claudia B	24m	10m	2.2m	PDJL / 246289000
	Coastal Discovery / Acta Marine	1.48m	11.84m	1.48m	PBUZ / 246627000
	Coastal Explorer / Acta Marine	25.1m	7m	0.75m	PIML / 245783000
	Coastal Vanguard / Acta Marine	32.3m	9.3m	3.2m	PCFH / 246743000
	CS Sovereign / Global Marine	130.7m	21m	7m	MNNU8 / 23289000
	Dalby Tees / Dalby Offshore Services Ltd	20.9m	7m	2.1m	2FIA7 / 235091458




Egesund	23m	7m	3.7m	OWEQ2/ 219012959
Egesund/Svendborg Towing	22.05m	7.25m	3.07m	MMSI 219012959
Elegant Tern	14.1m	4.9m	2.19m	219015246
En Avant 1/ Rederij Muller	23.9m	7.9	4.1	PHDP / 246375000
Fastnet Tern / Gardline	14m	5m	1.2m	2EFB2 / 235084546
Felucca / GPS Marine	10m	2.6m	1m	No Info
Fiona F / GSS	26.5m	11m	2.8m	2ECT7 / 235084017
Forth Joustler / Briggs Marine	26m	12m	2.5m	2BME4 / 235067372

	Geofocus / Osiris Project	34.5	8.33	2.0m	PCOS / 246836000
	HAM 601	61.4m	15.8m	3.1m	PENA
	Haven Seaforth / Red 7 Marine	29.6m	18.2m	2.3m Max	No Call Sign / No MMSI
	HBC Supporter / Hyperbaric Consult Aps	28.8m	9.27m	3.3m	V3NA4 / 312869000
	Lydia D / Stemat BV	31m	10m	3.2m	PCNI / 246196000
	Maggi M / GS Plant	21m	9m		2APP2 / 235061904
	MCS Elly / Marine Craft Services	25.4m	9.5m	2.4m	VSTD5 / 235004561
	MCS Maestro / Marine Craft Services	19.2m	7.3m	1.2m	2ERD5 / 235087484

	MCS Maestro / Marine Craft Services	19.1m	7.3m	1.5m	2ERD5 / 235087484
	MCS Zephyr / Marine Craft Services	19.1m	7.3m	1.5m	2EIS5 / 235085481
	MPI Adventure / MPI Offshore - Vroon	138.5m	40.8m	Light ship - 3.5m	PCKV / 245924000
	MPI Discovery / MPI Offshore - Vroon	138.5m	40.8m	Light ship - 3.5m	PCFF / 246741000
	MPI Rucio / MPI Offshore - Vroon	15.5m	6.3m	0.91	2CVW7 / 235076232
	MPR 2 / Marine Projects Rotterdam	26.5m	11m	2.7m	PBQL / 246130000
	MPR 4 / Marine Projects Rotterdam	21.6m	9.0m	2.0m	PBZR / 246478000
	MPR 4 / Marine Projects Rotterdam	20m	9m	1.8m	PBZR / 246478000

	MPR2 / Marine Projects Rotterdam	26.5m	11m	2.7m	PBQL / 246130000
	OMS Pollux / Nordic Offshore	39m	10m	3.5m	OVQ02 / 219008709
	Ostsee / Van Oord	99.8m	17.7m	5.6m	PBMY / 245593000
	Our Pride / Major Hartley (NFFO)	18.2m	6.7m	4m	MDAX2 / 234093000
	Pontra Maris / Stemat Marine Services	69m	24m		PGUZ / 245724000
	Provider Northern Offshore Services	13.7m	6.3m	1.8m	OXUG2 219014427
	RV Discovery / EMU Ltd.	22.7m	7.6m	3.9m Max	2AEL8 / 235058988
	SB Seaguard / Safety Boat Services	28m	5.1m	2.2m	2DSU2 / 235081746

	Sea Alfa / Sea Contractors	30.1m	9.1m	3.2m	PHSA / 245168000
	Sea Charlie / Sea Contractors	26m	9.1m	2.6m	PHSC / 244177000
	Sea Discoverer / International Shipping Partners	100m	12m	4m	C6YZ8 / 311050300
	Sea Echo / Sea Contractors	23.4m	8.0m	2.1m	PHLP / 244905000
	Sea Golf / Sea Contractors	27	8.0	2.7	PBSS / 246590000
	Seawatch III / Seawatch Safety Boats	8.8m	3.0m	0.9	VQLU7 235065839
	Seaworker / A2Sea	55.5m	33m	3.6m	OYRN2 / 219015441

	Stemat Oslo / Stemat Marine Services	76m	24m	3.5m	PHMG
	Storm	12m	4.9m	1.25m	PBQG 246508000
	Sure Pride / Sure Wind	22.0m	7.0m		2FUM7 / 235094357
	Thames Explorer	12.0m	4.2m	1.2m	TBA
	Valkyrie / Valkyrie Charters	11.99	4.5	1.3	2BWA9 / 235069806
	Vanishing Point 1	20m	Not yet availabl e	Not yet availa ble	Not yet available
	Wilcarry 300 / Williams Shipping Marine Ltd	36m	8m	1.43	N/A
	WindCat 4 / Windcat Workboats	15m	6.1m	0.9m	MLAD6 / 235032079

	WindCat 6 / Windcat Workboats	15m	6.1m	1.8m	MXFO / 2350577789
	Windspeed 4/	12.0m	4.0m	1.0m	2BOO9 / 235067956
	Wlyfa Head	15.4m	6.3m	0.95m	2BSR9/ 235069011
	Yvonne W / Stemat Marine Services	26.5m	11.0m	3.7m	PCMG/ 246690000
	Deliverer / Northern Offshore Services	15.5m	6.3m	1m	2BDR9 / 235065246
	SC Buzzard / Sima Charters B.V	18.5m	6.1m	1.55m	2GAX3 / 235095882
	Cwind Asherah / Ctruk Boats Ltd	18.5m	6.1m	1.26m	2EHW3 / 235085274
	Wind Ambition / C-Bed	153m	20m	5.6m	2DKR6 / 235079807



Cardinal P / Offshore Turbine Services	18.5m	6.1m	1.26m	2FKK9 235092017
Samson B	16m	6.0m	1.7m	2DYY8 / 235083117
Commodore P / Offshore Turbine Services	18.5	6.1	1.26	
Sea Rex	22.35m	5.4m	1.9m	OYYO2 / 219014413
Claudia B	24m	10m	2.2m	PDJL / 246289000
Red 7 Reel/ Red7 Marine	90.0M	18.0m	4.5m	J8B3100 / 376002500
Windcat 20 / Windcat Workboats (prop)	18m	6.5m	1.9m	2CQX8 / 235075026



Ziton Wind Server / Jack-up vessel	79.3m	32.3m	7m	OWLB2 / 219615000
---	-------	-------	----	-------------------

Admiral P Offshore Turbine Services (Jet)	18.5m	6.1m	1.2m	2FVD7 / 235094496
--	-------	------	------	-------------------

Admiral P	18.5m	6m	1.2m	Call sign 2FVD7 MMSI 235094496
------------------	-------	----	------	-----------------------------------



Seajacks Hydra	75m	36m	7.01m	Call Sign 3FEI3 MMSI 370239000 IMO 9669093
-----------------------	-----	-----	-------	--

Wind Pioneer	56.03m	28m	3.0m	Call Sign OWLA2 MMSI 219017684
---------------------	--------	-----	------	-----------------------------------



MV C-Force	27.7m	12.45m	2.85m	Call sign MITT4 MMSI 232033970
-------------------	-------	--------	-------	-----------------------------------



Spectrum 1 Spectrum Offshore (Fixed Prop)	16.5m	6.5m	1.6m	Call Sign 2CQX5 MMSI 235075020
--	-------	------	------	-----------------------------------

	coastal Challenger	36m	12m	2.4m	Call Sign PBOC MMSI 244913000
	Brutus	24m	10m	2.8m	Call Sign 2FIG9 MMSI 235091503
	Ndurance	99m	30m	4.8m	Call Sign 5BVH3 MMSI 209851000
	NOS Northen Wave	83.7m	19.7m		Call Sign OXDR2 MMSI 21912000
	Geosurveyoy XI	21.11m	6.4m	2.2	Call sign: 2GRS3 MMSI: 235099951
	Windcat 21 Windcat Workboats (Jet)	18m	6m	1m	Call Sign 2DCN9 MMSI 235077831
	Windcat 39 Windcat Workboats (Variable pitch prop)	19m	6.5m	2.5m	Call Sign 2JAV6 MMSI 235114376
	Spectrum 3 Spectrum Offshore (Fixed Prop)	23m	6.5m	1.8	Call Sign 2DXB6 MMSI 235082698



**Spectrum 2
Spectrum Offshore
(Jet drive)**

21m

7.4m

1.0m

Call sign
2GHES

MMSI
235097363



**Windcat 17
Windcat
Workboats
(fixed prop)**

20.3m

6.1m

2.0m

Call Sign
2BYD5

MMSI
235070402

arm



Contractor	Site Function	Base Port	Date
GeoSea	Crane Barge. Substation installation	Harwich	On site
	Not available	Visser Smit Global Marine (VSGM)	Guard boat / General duties
GeoSea	Anchor Handling Tug for Rambiz	Offshore	On site
	Not yet available	VSMC	Tug for Pontra Maris
EMU Surveys Ltd.	Survey vessel	Ramsgate	Off site
	Tel: 00442035191938 00442035190229 00442035190227	Visser Smit Global Marine (VSGM)	Hotel Ship

Whitstable

Sheerness

Offshore

EMU Surveys Ltd.	Survey vessel	Ramsgate	Off site		
Visser Smit Global Marine (VSGM)	Tug for Haven Seaforth (excavator recovery)	Northfleet	Off site		
	Not yet available	VSMC	Multipurpose Multicat	Sheerness	
Not yet available	31612973251	VSMC	Multi purpose Multicat - Anchor Handling tug	Ramsgate	
	Not yet available	Visser Smit Global Marine (VSGM)	Cable burial	Sheerness	
	Tel: 0031611316813. Sat Phone: 00870773200124	Visser Smit Global Marine (VSGM)	Towage duties	Sheerness	
	Not available	Visser Smit Global Marine (VSGM)	DPS-2 Cable lay v/l Array cables (Deep water)	Sheerness	
	dalbytees@dalbyoffshore.com	VSMC	Crew Boat	Ramsgate	

	Not yet available	VSMC	TUG	TBA	
	0045 40349911	VSMC	PLGR Tug	Ramsgate	
	+4530867087	VSMC	Crew Boat	Ramsgate	
GeoSea	Tow tug for barge H331	Felixstow	On site		
	Mobile: 07870644833 / fastnettern@fastnetshipping.com	LAL	Personnel transfer	Ramsgate	
Visser Smit Global Marine (VSGM)	Tug/workboat (Cleve Hill)	Medway	Off site		
	Not available	Ballast Nedham	Anchor handling tug for Svanen	Ramsgate	
	7969515016	VSMC	Multipurpose Multicat	Sheerness	

	+31654392878	LAL	Export cable surveying	Ramsgate	
	0031624879419 0601.cpt@vanoord.com	Van Oord	Rock Dumper	TBC	
Visser Smit Global Marine (VSGM)	Spud Leg Barge (excavator recovery)	Northfleet	Off site		
	00447741 579564	VSMC	Dive Support Vs	Ramsgate	
	Not yet available	ABJV	Tug for Stemat Oslo	Sheerness	
	maggiem@gssplant.co.uk	VSMC	Anchor handling for Stemat Oslo	Ramsgate	
+44 7769934448 / elly@maritimecraft.co.uk		LAL	Cable Pre Lay Grapnel Run	Whitstable	
+7557 560014 / maestro@maritimecraft.co.uk	Visser Smit Global Marine (VSGM)	Personnel Transfer	Sheerness	On site	

	Tel: 07557560014/ mcsmaestro@mariti imecraft.net	Visser Smit Global Marine (VSGM)	Crew Boat	Ramsgate	
	/ mcszeohyr@mariti mecraft.net	Visser Smit Global Marine (VSGM)	Crew Boat	Sheerness	
	+44 7557283876 / bridge@mpi- adventure.com	LAL	DP 2 Jack-up ship - Foundation installation	Harwich	
	07785464097 / master@mpi- discovery.com	LAL	DP 2 Jack-up ship - Turbine installation	Harwich	
+44 7872542185 / rucio@mpi- workboats.com	+44 7872542185 / rucio@mpi- workboats.com	ABJV	Crew Boat	Harwich	
	+31642354325	VSMC	Multipurpose Multicat	Sheerness	
Visser Smit Global Marine (VSGM)	Multicat. PLGR - cable lay	Ramsgate	Off site		
	+31836424831	VSMC	Multipurpose Multicat	Sheerness	

	31642354325	Visser Smit Global Marine (VSGM)	Anchor handling for Stemat Spirit	Sheerness	
	Tel: 004540414864 oms.pollux@amosc onnect.com	Visser Smit Global Marine (VSGM)	Dive support vessel	Ramsgate	
ABJV	Trailing suction hopper dredger for Sub stations foundations	N/A	Off Site /04/2011		
	7803089753	Visser Smit Global Marine (VSGM)	Guard Vessel / Export cable crossing	Ramsgate	
	Not yet available	VSMC	Cable lay barge Shallow water	Sheerness	
	0046 761808020 provider@n-o-s.eu	Siemens	Crew Boat	Ramsgate	
EMU Surveys Ltd.	Survey vessel	Ramsgate	Off site		
LAL	Guard vessel / MMO	Ramsgate	Off site		

+31 61153313 / seaalfa@gmail.com	+31 61153313 / seaalfa@gmail.com	A2Sea	Lead Tug for Seaworker	Harwich	
	Tel(Mobile):+31 6 50979807 Tel (Sat) : +87 0773150181 mailseacharlie@gmail.com	VSMC	Lead tug for Stemat Oslo	Ramsgate	
	07551464798 / captain@mvseadiscoverer.com	VSMC	Hotel Ship	Ramsgate	
+31 629530782 / echoatsea@gmail.com	+31 629530782 / echoatsea@gmail.com	A2Sea	AHT for Seaworker	Harwich	
	mobile:0031629530784	VSMC	Tow Tug - TP delivery barge (E3001)	Flushing	
LAL	Marine Mammal Observation	Ramsgate	Off site		
+45 52139553 / seaworker@a2sea.com	+45 52139553 / seaworker@a2sea.com	LAL	Jack-up barge: Shallow water - WTG installation	Harwich	

	31 6 15026316 /+31 650569723 / stematoslo1@gmail .com	VSMC	Array Cable lay barge	Sheerness	
	+31623635631 info@deepbv.nl	VSMC	Survey vessel	Ramsgate	
	7795118015	VSMC	Crew Boat	Ramsgate	
	07904 256046	Visser Smit Global Marine (VSGM)	Crew Boat	Sheerness	
	07831878669 / valkyriecharTERS@hot mail.co.uk	VSMC	Survey Boat	Ramsgate	
	Not yet available	Siemens	Crew Boat	TBA	
	Not available	Visser Smit Global Marine (VSGM)	Pontoon Barge - Cable trench at beach head	Offshore	
	7876743609	VSMC	Crew Boat	Ramsgate	

	07554013325 / windcat6@windcatworkboats.com	VSMC	Crew Boat	Ramsgate	
	07795161424 / windspeed4@windcatworkboats.com	VSMC	Crew Boat	Ramsgate	
	7748764359	VS HANAB	Crew Boat	Ramsgate	
	tel. : +31(0)611007282 sat. : +87 0773230987 : master.yvonnew1@amosconnect.com	Visser Smit Global Marine (VSGM)	Multi purpose vessel	Ramsgate	
	0046761808010	Siemens	Crew Boat	Ramsgate	
	scbuzzard@simacharters.com	Siemens	Crew Boat	Ramsgate	
Not yet available	07552874631 / cwindasherah@gmail.com	Siemens	Crew Boat	Ramsgate	
	master.windambition@c-bed.nl / 00447889405736	Siemens	Offshore Hotel	At Anchor	

<u>Not yet available</u>	cardinalp@offshoreturbinervices.co.uk	Siemens	Crew Boat	Ramsgate	
	Not yet available	LAL	Crew Boat	Harwich	
<u>Not yet available</u>	commodorep@offshoreturbinervices.co.uk	Siemens	Crew Boat	Ramsgate	
	7787326288	VSMC	Crew boat	Ramsgate	
	Not yet available	VSMC	Multipurpose Multicat	Ramsgate	
	0044 7917422942 dprelr7m.master@gmail.com	LAL Construction	Dive support vessel	Great Yarmouth	On Site
0@windcatworkbo	LAL O&M	Crew Transfer Vessel	Ramsgate		On Site

TBC	LAL	Jack-up vessel	N/A		On Site
admiralp@offshore-turbineservicesltd	LAL	Drone Survey	Ramsgate		On site
admiralp@offshore-turbineservices.co.uk	LAL	Drone Survey Vessel	Ramsgate		On Site
-	LAL	Jack Up Vessel	-		On Site 14/06/2021
-	Ziton	Jack up Vessel	-		On Site
07718424492 c-force@leaskmarine.com	Leask Marine	Dive Support Vessel	Harwich		On Site
07538565561 spectrum1@spectrum-offshore.com	LAL	Survey vessel	Ramsgate		On Site

otto.vt.veer@boskalis.com	Boskalis	Ancor handling tug	LAL Windfarm		On Site
otto.vt.veer@boskalis.com	Boskalis	Ancor handling tug	LAL Windfarm		On Site
ndurance-captain@boskalis.com	Boskalis	Accomidation barge	LAL Windfarm		On Site
To Be Confirmed	LAL	Offshore Supply Ship	Denmark		On Site
surveyor-xXI@geox	Blue Transmission	Survey Vessel	Ramsgate		Due Sunday 4th September
1@windcatworkboats	LAL	Crew Transfer Vessel	Ramsgate		On Site
07867 335 489 windcat39@windcatworkboats.com	LAL	Crew Transfer Vessel	Ramsgate		On Site
07538562919 spectrum3@spectrum-offshore.com	LAL	Crew Transfer Vessel	Ramsgate		On Site

07538562919 spectrum2@spectrum-offshore.com	LAL	Crew Transfer vessel (Seajacks Hydra)	Ramsgate		On Site
07825135740 windcat17@windcatworkboats.com	LAL	Crew Transfer Vessel	Ramsgate		On Site







